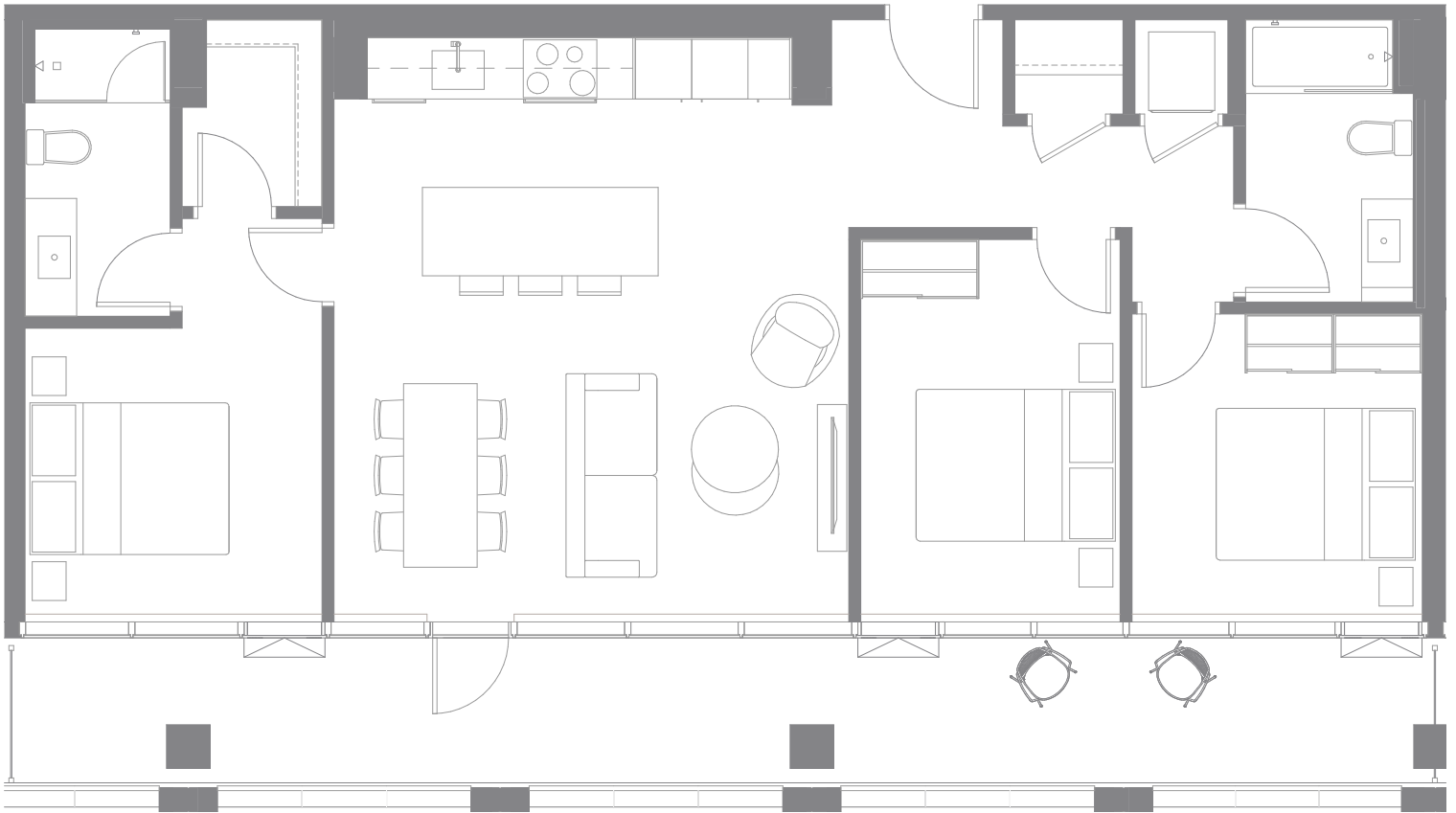


**3B2**  
**3 CHAMBRES / BEDROOMS**

**Mansfield**

Unités / Units  
 1705

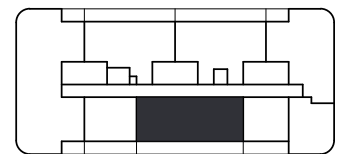
2 SALLES DE BAIN / BATHROOMS  
 LOGGIA



**1038** pi<sup>2</sup>/sq. ft.  
 LOGGIA 285 pi<sup>2</sup>/sq. ft.

Total **1323** pi<sup>2</sup>/sq. ft.

CUISINE KITCHEN	SÉJOUR SALLE À MANGER LIVING ROOM DINING ROOM	CHAMBRE PRINCIPALE MASTER BEDROOM	SALLE DE BAIN PRINCIPALE MASTER BATHROOM
16' - 11" x 8' - 1"	17' - 5" x 11' - 9"	10' - 2" x 10' - 0"	4' - 7" x 10' - 1"
CHAMBRE 2 BEDROOM 2	CHAMBRE 3 BEDROOM 3	SALLE DE BAIN BATHROOM	LOGGIA LOGGIA
8' - 8" x 11' - 8"	10' - 2" x 8' - 5"	5' - 8" x 9' - 7"	48' - 3" x 5' - 0"



MANSFIELD

ÉTAGE / FLOOR 17

