

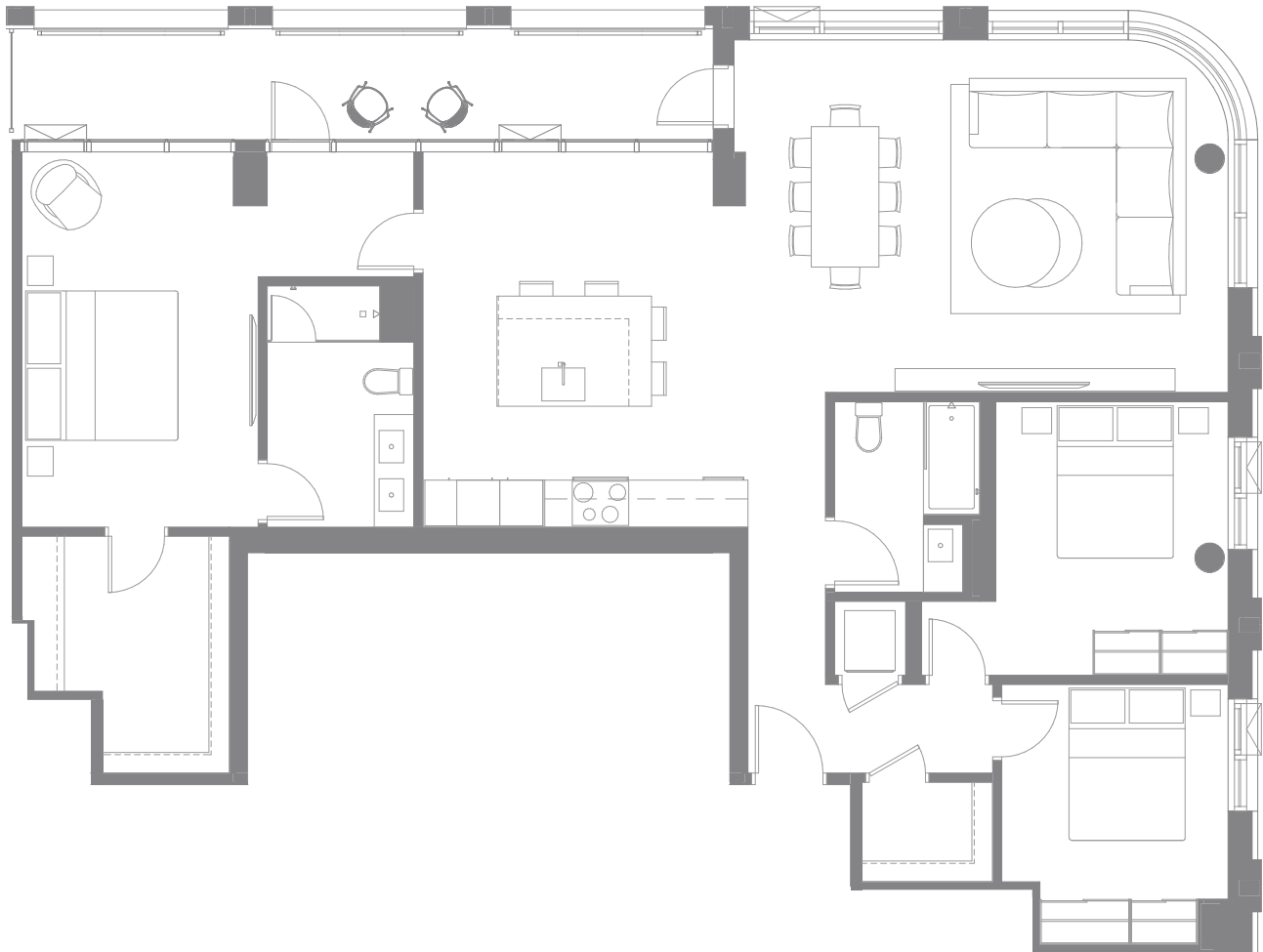
**C-10**  
**3 CHAMBRES / BEDROOMS**

**Mansfield**

Unités / Units

1502

2 SALLES DE BAINS / BATHROOMS  
 LOGGIA



**1573** pi<sup>2</sup>/sq. ft.

LOGGIA / LOGGIA 184 pi<sup>2</sup>/sq. ft.

Total **1757** pi<sup>2</sup>/sq. ft.

CUISINE SALLE À MANGER KITCHEN DINING ROOM	SÉJOUR LIVING ROOM	CHAMBRE PRINCIPALE MASTER BEDROOM	SALLE DE BAIN PRINCIPALE MASTER BATHROOM
9' - 7" x 16' - 10"	21' - 5" x 16' - 7"	10' - 6" x 16' - 8"	9' - 6" x 9' - 4"
CHAMBRE 2 BEDROOM 2	CHAMBRE 3 BEDROOM 3	SALLE DE BAIN BATHROOM	LOGGIA LOGGIA
10' - 4" x 12' - 0"	10' - 0" x 9' - 6"	6' - 5" x 8' - 5"	31' - 1" x 5' - 0"



MANSFIELD

ÉTAGE / FLOOR 15